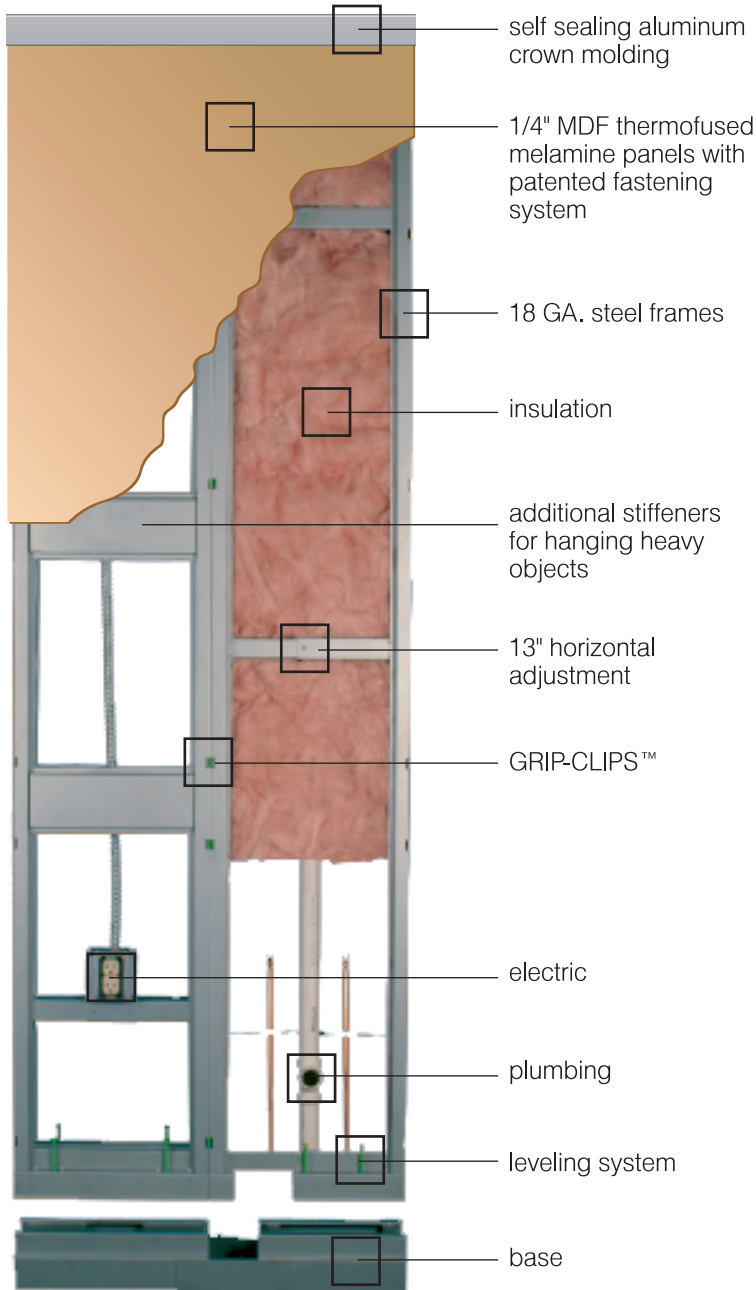


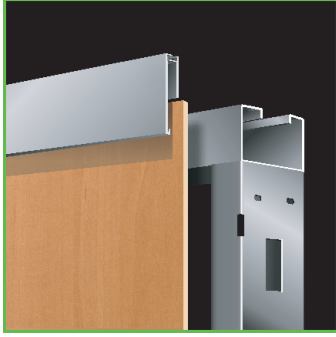
FREESTANDING WALL SYSTEM

FRAMING WALL

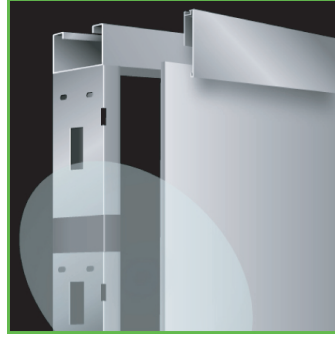


An interior wall system that replaces drywall construction. Unique patented design adjusts to uneven field conditions and accommodates electric and data wiring, plumbing and insulation. In most applications, it does not need to attach to the floor or ceiling.

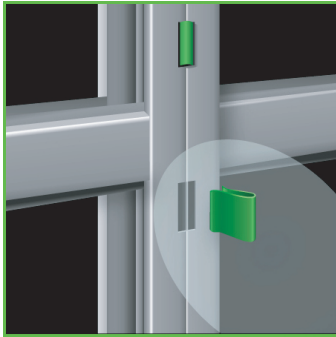
DETAILS



aluminum magnetic crown molding



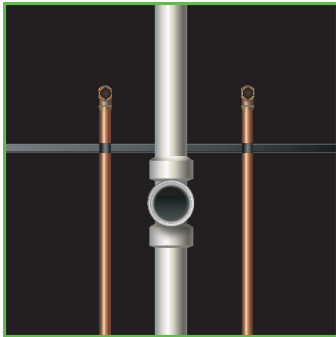
up to 3" vertical adjustment



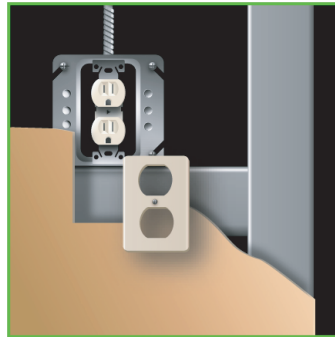
GRIPCLIPS for rapid installation and structural alignment



13" horizontal adjustment



SMARTWALLS can accommodate plumbing



4" x 4" electrical box with or without components



leveling system adjusts up to 1 1/2"



standard commercial cove bases are applied to SMARTWALLS base with adhesive